



Beulah Hill, SE19 | Offers Over £1,500,000

020 8702 9333

crystalpalace@pedderproperty.com

pedder
We live local



In General

- 3004 sq ft / 279.1 sq m
- Five bedroom detached house
- Picturesque sunny rear garden
- Kitchen / diner
- Period detail
- Gated off street parking and a garage
- 22ft bedroom with luxury en suite
- Quietly set back from the road
- Welcoming entrance hall

In Detail

An exceptional five bedroom detached house occupying a very generous plot with secluded grounds and a stunning rear garden.

This unique property has been in family ownership for many years and has been lovingly maintained and improved to offer a spacious, comfortable, and long-term family home.

The accommodation footprint totals 3004 sq ft / 279.1 sq m and is well appointed over two levels. A grand entrance hall sets the tone of the house with beautiful solid wood parquet flooring and original period details, leading to a dining room with French doors to an outside courtyard. The main reception room extends to 24ft with a striking feature fireplace and leaded bay windows overlooking a picturesque rear garden. The kitchen / diner is a more relaxed setting and definitely one for cooks - there is ample countertop and storage space, bespoke carpentry and an Aga which is not only great for baking, but gives a welcoming and cosy warmth in winter months. The remainder of this floor comprises a separate WC, and a second kitchen / utility room. Upstairs is a characterful galleried landing with a skylight, which leads the five well proportioned bedrooms (with fitted storage) and the main bathroom with a separate shower. The largest bedroom is 22ft and boasts two banks of fitted wardrobe storage and a large luxurious four-piece en suite with a sizeable tub and a separate walk-in shower.

Externally there is a 180ft mature rear garden with magnolia trees surrounding a pleasant water feature. This impressive space is the perfect backdrop for for relaxing or gatherings on sunny summer days, with sectioned areas that offer a multitude of options. The front of the house affords gated parking for multiple vehicles, access to the garage, and pretty landscaped borders.

A stunning house that needs to be viewed to be appreciated.

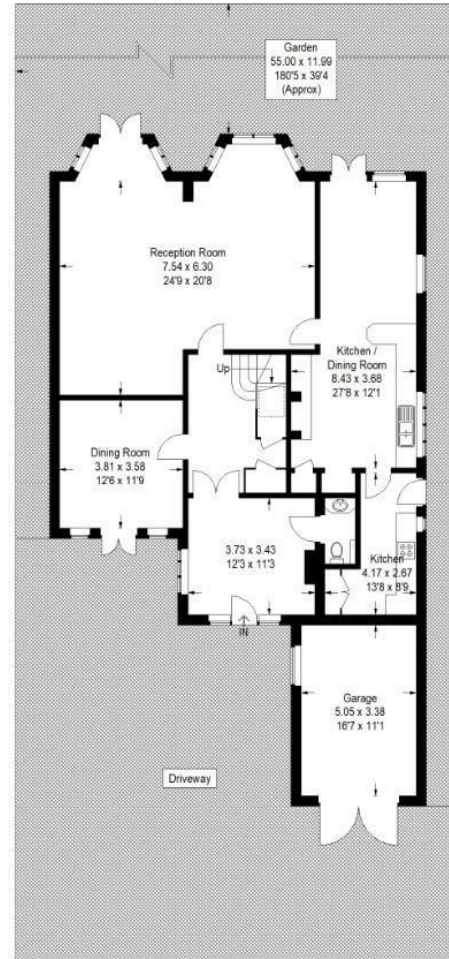
EPC: D | Council Tax Band: G



Floorplan

Beulah Hill, SE19

Approximate Gross Internal Area
 279.1 sq m / 3004 sq ft
 Garage = 17.7 sq m / 191 sq ft
 Total = 296.8 sq m / 3195 sq ft

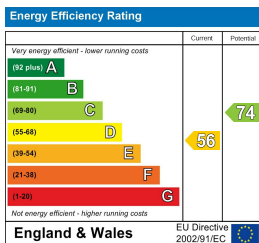


Ground Floor

First Floor

Copyright www.pedderproperty.com © 2025

These plans are for representation purposes only as defined by RICS - Code of Measuring Practice. Not drawn to Scale. Windows and door openings are approximate. Please check all dimensions, shapes and compass bearings before making any decisions reliant upon them.



Pedder Property Ltd trading as Pedder for themselves and for the vendor/landlord of this property whose agents they are, give notice that (1) these particulars do not constitute any part of an offer or contract, (2) all statements contained within these particulars are made without responsibility on the part of Pedder or the vendor/landlord, (3) whilst made in good faith, none of the statements contained within these particulars are to be relied upon as a statement of representation or fact, (4) any intending purchaser/tenant must satisfy him/herself by inspection or otherwise as to the correctness of each of the statements contained within these particulars, (5) the vendor/landlord does not make or give either Pedder or any person in their employment any authority to make or give representation or warranty whatsoever in relation to this property.